

# Send a Referral



ONLINE

Complete an online referral at  
[bridgecarespecialists.com/refer](https://bridgecarespecialists.com/refer)

## Testimonials



BridgeCare has been a critical service. They have made our discharges easier than ever.

- Hospital Case manager

With BridgeCare overseeing, we can start working with patients right away. We don't need to wait anymore.

- Home Health Nurse



100% Patient Satisfaction Ratings

## Value Add

Our services can add value for ANY patient unable to get a primary care appointment within the first two weeks of coming home.

## Insurance Criteria

All BridgeCare services are covered by insurance if:

1. One face-to-face video visit is completed within the first 14 days

2. The patient is discharged from an acute care setting. This includes inpatient, observation, and subacute rehab.

*Note, that ER and urgent care visits do not qualify for insurance coverage.*

## ACCEPTED INSURANCES



## HOSPITAL AFFILIATES & PARTNERS



PHONE  
517-258-0344



FAX  
517-879-0374



EMAIL  
[contact@bridgecarespecialists.com](mailto:contact@bridgecarespecialists.com)



# BridgeCare

[BRIDGECARESPECIALISTS.COM](https://bridgecarespecialists.com)

PREMIERE VIRTUAL  
**DISCHARGE CLINIC**



Convenient, Collaborative, &  
Statewide Physician Services



## About Us

BridgeCare Specialists is a virtual post-discharge clinic offering 60+ days of specialized care within the sanctuary of a patient's home, Ensuring a seamless transition from inpatient to outpatient care,

BridgeCare physicians are adept in both inpatient and outpatient treatments. They are uniquely trained to recognize and address care gaps. With this expertise, we've refined a suite of services tailored to optimize patient outcomes.

Upon referral, our team dedicates itself to offering uninterrupted medical support until the patient establishes a connection with their primary care physician. Our collaboration and acuity-based needs has resulted in a stellar achievement: a re-admission rate to hospitals and ERs of **under 2%**.

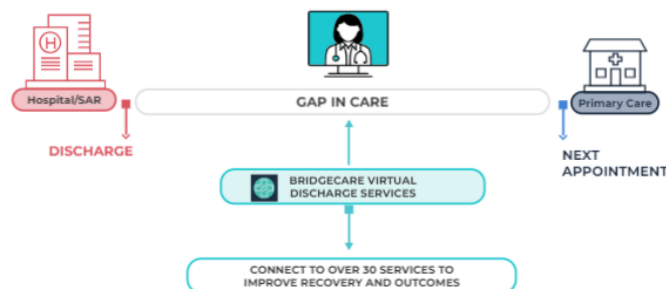
## Overview

From referral to graduation, we work with patients to help them navigate the complex post-acute landscape, improving their well-being and outcomes.



We welcome collaborating with home health companies, hospitals, PCPs, and other outpatient services to fortify a bridging service that makes a difference.

## Big Picture



## Our Services

### Direct Services

|                              |                           |
|------------------------------|---------------------------|
| Review records with patient  | Provide recommendations   |
| Provide med refills/ changes | Start psychiatric Meds*   |
| Manage side effects          | Answer clinical questions |
| Health & System Education    | Send Referrals            |

### Order & Supervise

|                       |                           |
|-----------------------|---------------------------|
| Home IV infusions*    | Wound Management Recs     |
| Home Physical Therapy | Speech Therapy            |
| Home labs             | Home Nursing (immediate)* |

### Recommend & Refer

|                    |                   |
|--------------------|-------------------|
| Visiting Doctors*  | Pulmonary Therapy |
| Podiatry           | Dementia Care     |
| Cardiac Therapy    | Hospice           |
| Respite Care       | Private Care/Aids |
| Counseling/Therapy |                   |

\*Highlighted boxes represent distinctive services based on scarcity or the promptness of the initial visit