

# BENEFITS FOR PATIENTS

## ► Prevent repeat ER visits

We'll monitor your symptoms, refill medications, and do what we can to keep you at home and recovering.

## ► Virtual appointments

All our visits are done via phone or computer, so there's no need to leave your home or arrange transportation.

## ► Personalized care

We offer longer appointment times, giving you more opportunities to ask questions and get answers.

## ► Availability and convenience

Evening and weekend appointments available. We also accept the majority of insurances, Medicare, and Medicaid.

## ► Care coordination

We'll work with your entire health team - whether it's home care providers, specialists, or family caretakers.

BridgeCare helped me with my hospital medications and sent in new prescriptions when I had a problem. It was nice to do all my visits from home and not have to leave the house when I was sick. They also helped me set up with a new doctor in town. I can't be more happy to have their help.

— Mary M: Flint, MI

### ACCEPTED INSURANCES



### HOSPITAL AFFILIATES & PARTNERS



PHONE  
517-258-0344



FAX  
517-879-0374



EMAIL  
[contact@bridgecarespecialists.com](mailto:contact@bridgecarespecialists.com)



**BridgeCare**  
Specialists of Michigan  
[BRIDGECARESPECIALISTS.COM](http://BRIDGECARESPECIALISTS.COM)

PREMIERE VIRTUAL  
DISCHARGE CLINIC

Patient Brochure

Convenient, Collaborative, &  
Statewide Physician Services



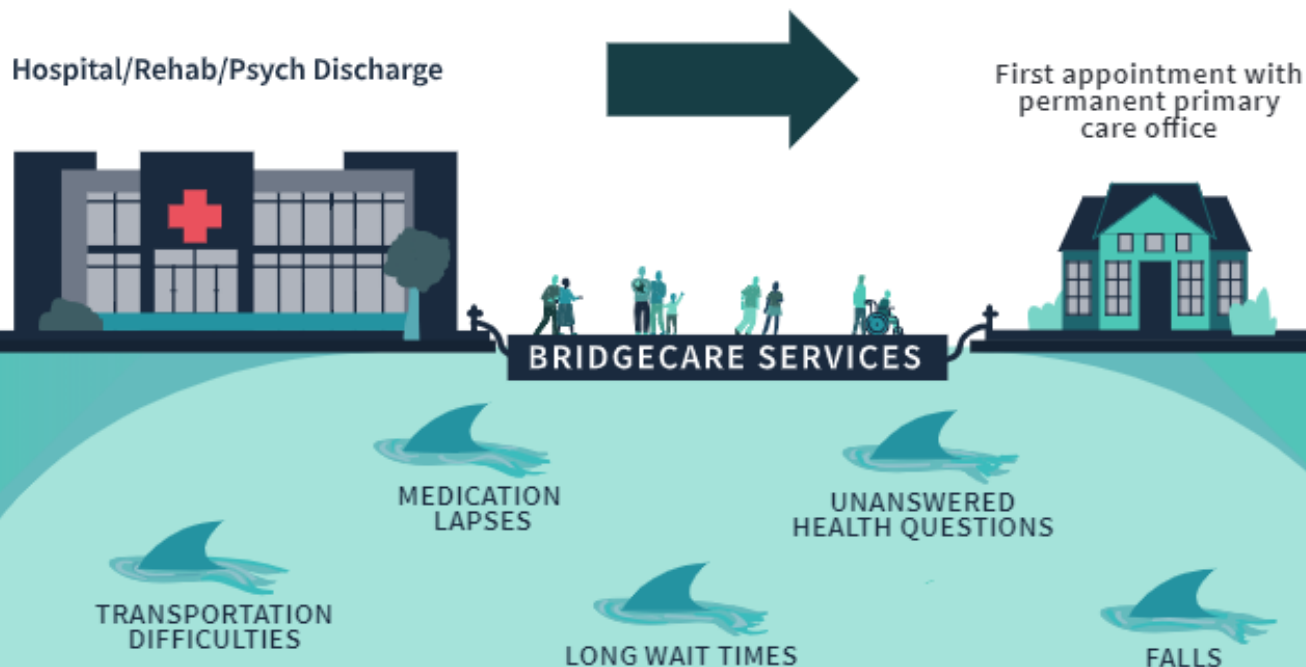
# OUR MISSION

When leaving a hospital or rehabilitation facility, many patients may need a doctor to oversee home care (like nursing and physical therapy), make prescription refills, and do check-up appointments.

Without a doctor, their stay at the hospital may be longer, or they might even end up going back into the ER.

BridgeCare offers temporary primary care (typically lasting 30 days) to ensure patient recovery stays on the right path until they can establish with their regular primary care provider.

## BridgeCare Bridges Critical Gaps in Care



## Our Services

### Direct Services

Review records with patient	Provide recommendations
Provide med refills/ changes	Start psychiatric Meds*
Manage side effects	Answer clinical questions
Health & System Education	Send Referrals

### Order & Supervise

Home IV infusions*	Wound Management Recs
Home Physical Therapy	Speech Therapy
Home labs	Home Nursing (immediate)*

### Recommend & Refer

Visiting Doctors*	Pulmonary Therapy
Podiatry	Dementia Care
Cardiac Therapy	Hospice
Respite Care	Private Care/Aids

Counseling/Therapy

\*Highlighted boxes represent distinctive services based on scarcity or the promptness of the initial visit